

70/80/90 ICONIC AUSTRALIAN HOUSES

KAREN McCARTNEY
ISBN 9781743365311

GOTTLIEB HOUSE CAULFIELD, VICTORIA

- ARCHITEXT BOOKSTORE

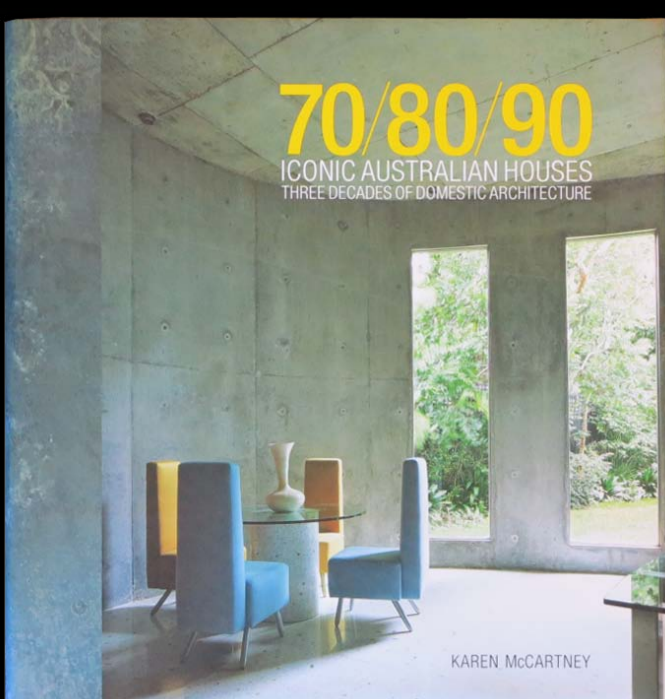
1/41-43 Exhibition Street, Melbourne VIC 3000, (03) 8620 3815

link: www.architext.com.au

- THE AVENUE BOOKSTORE

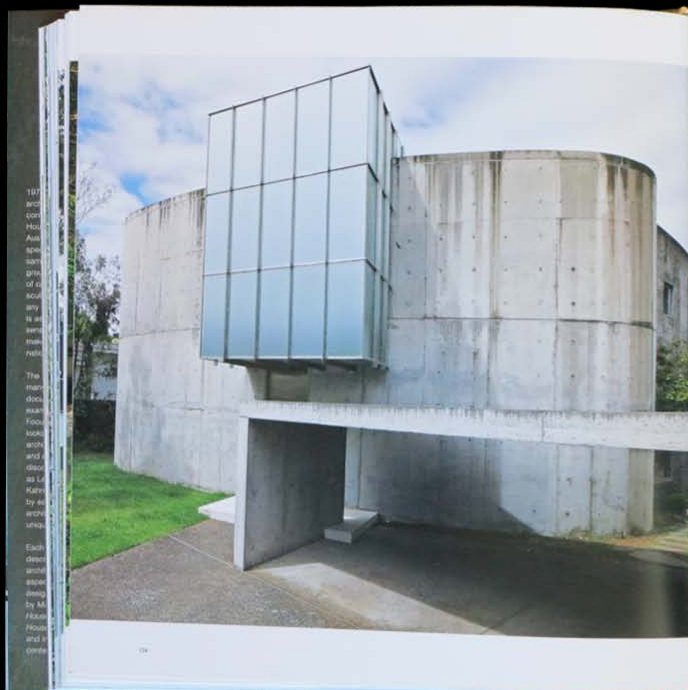
127 Dundas Place, Albert Park VIC 3206, (03) 9690 2227

link: www.avenuebookstore.com.au



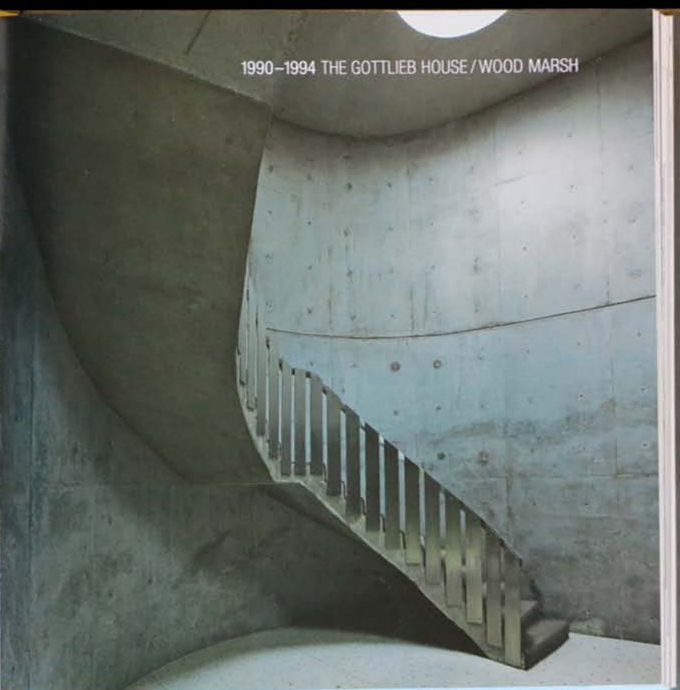
70/80/90
ICONIC AUSTRALIAN HOUSES
THREE DECADES OF DOMESTIC ARCHITECTURE

KAREN McCARTNEY



1970
1980
1990
2000
2010
2020
2030
2040
2050
2060
2070
2080
2090
2100
2110
2120
2130
2140
2150
2160
2170
2180
2190
2200
2210
2220
2230
2240
2250
2260
2270
2280
2290
2300
2310
2320
2330
2340
2350
2360
2370
2380
2390
2400
2410
2420
2430
2440
2450
2460
2470
2480
2490
2500
2510
2520
2530
2540
2550
2560
2570
2580
2590
2600
2610
2620
2630
2640
2650
2660
2670
2680
2690
2700
2710
2720
2730
2740
2750
2760
2770
2780
2790
2800
2810
2820
2830
2840
2850
2860
2870
2880
2890
2900
2910
2920
2930
2940
2950
2960
2970
2980
2990
3000

1990-1994 THE GOTTLIEB HOUSE / WOOD MARSH



'THE GAME HERE IS ONE OF GEOMETRIC FORMS: AN ELLIPTICAL RAW CONCRETE DRUM, A GLASS CUBE, A SLAB OF CONCRETE RESTING ON PARALLEL CONCRETE WALLS. EACH PRECISELY ARRANGED, THE COMPOSITION A STUDY IN SCULPTURAL ABSTRACTION. THIS IS STARK ARCHITECTURE: OUTWARDLY UNWELCOMING AND IMPENETRABLE; THERE ARE NO WINDOWS TO THE STREET.'

PROVISION PLANS: The Gottlieb House is an exercise in abstract forms and geometric forms. Its exterior is made of raw concrete, with a glass cube and a concrete slab resting on parallel concrete walls. The interior is made of raw concrete, with a concrete staircase and a concrete floor.

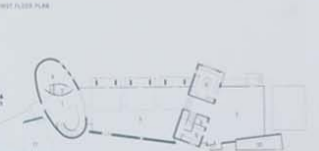


...of the house is a study in sculptural abstraction. This is stark architecture: outwardly unwelcoming and impenetrable; there are no windows to the street.



1991: The terraces facing back from the main room continue into the dining, living and kitchen areas. This space is placed to the north and east, with the kitchen located through the glazed glass wall. The view along the living terrace facing east of the house shows how the back face continues to be the main entertaining area and how to use the brick form at the front of the house.

and arranging to the point it has to be made there in 1991, it's a study in sculptural abstraction. This is stark architecture: outwardly unwelcoming and impenetrable; there are no windows to the street.



DETAILS THE GOTTLIEB HOUSE



HANDRAIL The simple concrete handrail is a study in sculptural abstraction. It is made of raw concrete and is placed on a concrete wall. The handrail is a study in sculptural abstraction. It is made of raw concrete and is placed on a concrete wall.

SLICES OF GLASS The glass cube is a study in sculptural abstraction. It is made of raw concrete and is placed on a concrete wall. The glass cube is a study in sculptural abstraction. It is made of raw concrete and is placed on a concrete wall.

KITCHEN The kitchen is a study in sculptural abstraction. It is made of raw concrete and is placed on a concrete wall. The kitchen is a study in sculptural abstraction. It is made of raw concrete and is placed on a concrete wall.

LIGHT FITTINGS The light fittings are a study in sculptural abstraction. They are made of raw concrete and are placed on a concrete wall. The light fittings are a study in sculptural abstraction. They are made of raw concrete and are placed on a concrete wall.

GLASS BOX The glass box is a study in sculptural abstraction. It is made of raw concrete and is placed on a concrete wall. The glass box is a study in sculptural abstraction. It is made of raw concrete and is placed on a concrete wall.

FURNITURE The furniture is a study in sculptural abstraction. It is made of raw concrete and is placed on a concrete wall. The furniture is a study in sculptural abstraction. It is made of raw concrete and is placed on a concrete wall.

