

WISH

APRIL 2021

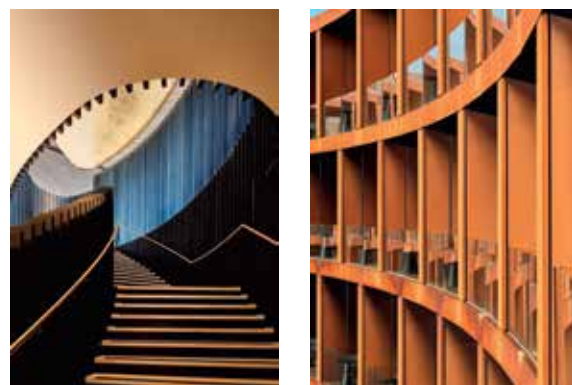
A MATTER OF DESIGN

Hilton's homage, a rugged outpost, and a star is born



HERITAGE TRANSFORMATION
HILTON MELBOURNE LITTLE QUEEN STREET

The 1931 Equity Chambers building on Little Queen Street in Melbourne has been reimaged as a 244-room Hilton hotel by Bates Smart. The architects have restored the original features of the heritage property, and added a modern six-level extension and a 16-level tower at the back. Julian Anderson, director of Bates Smart, told *Architecture and Design* the Hilton Melbourne Little Queen Street, which opened last month, does not step on the toes of the existing Equity Chambers site. “The new building is a restrained and respectful response, providing an elegant backdrop to the existing building,” he says. “It’s a real journey of discovery – it’s about taking heritage and opening up a piece of grand Melbourne for everyone to explore.”



BORN OF THE LANDSCAPE
RACV CAPE SCHANCK

The RACV Cape Schanck Resort is very much a building in situ; its architecture has been inspired by its rugged setting overlooking the treacherous Bass Strait on Victoria’s Mornington Peninsula. About an hour and a half’s drive from Melbourne and not far from Cape Schanck lighthouse, the wild and woolly locale is a nice antidote to the gentry of nearby Portsea and Sorrento. The \$130 million, 120-room hotel was designed by architects Wood Marsh and includes a gym, luxury day spa, restaurants, a golf club and a golf course. The “monolith” of a structure was inspired by the rolling dunes and presents as a landform that has eroded from the coast over time. “Wood Marsh has drawn from both the topography and the corrosive nature of the coastline to inform the sculptural geometry and material selection,” the Port Melbourne-based architecture firm says.

REACHING THE HEIGHTS
CRYSTALBROOK COLLECTION
KINGSLEY

A former council building has been transformed into Newcastle’s first five-star hotel by EJE Architecture for the hospitality group Crystalbrook Collection. Opening in June 2021, the Crystalbrook Kingsley – the name a tribute to Newcastle’s heritage as the city was known as Kingston in the early 1800s – will have 130 rooms, a rooftop restaurant, an outdoor terrace and two bars. The redevelopment of the local government office pays homage to the original brutalist 1907s architecture. The interiors were done by Suede Interior Design and the colour palette is full of shades of blacks with pops of yellows, referencing the area’s coalmining history.

